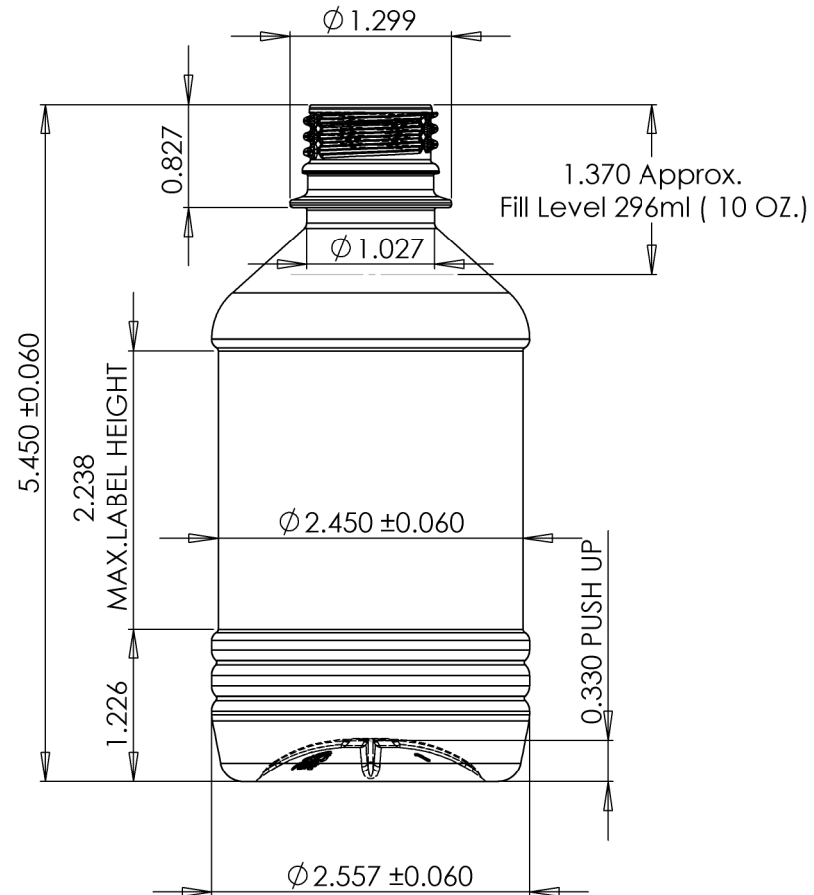


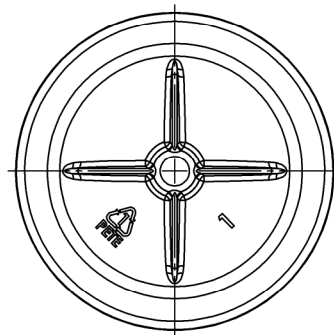
NOTE	DESCRIPTION	NAME	DATE
A	TOP RIB REMOVED, PREFORM WAS 21g	GS	1/22/2008
B	OD WAS 2.330", HEIGHT WAS 6.025"	GS	2/4/2008
C	VIEW WITH 26.7mm ALCOA FINISH ADDED PETE LOGO AND CAVITY# ADDED	GS	2/29/2008

**19.95gr PREFORM  
28mm PCO**

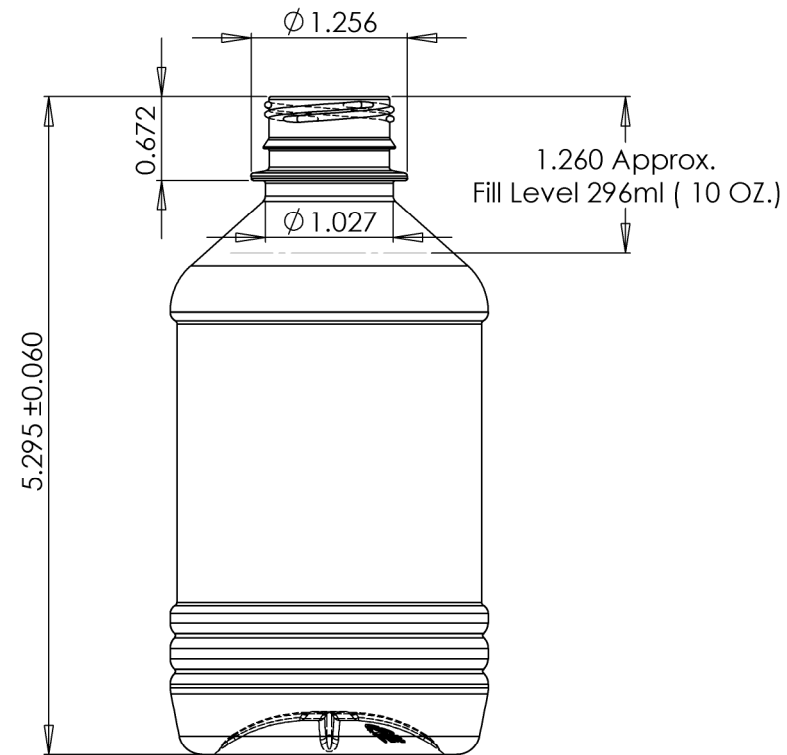


**PREFORM STRETCH RATIOS**

**LINEAR 1.47:1  
DIAMETER 3.83:1**

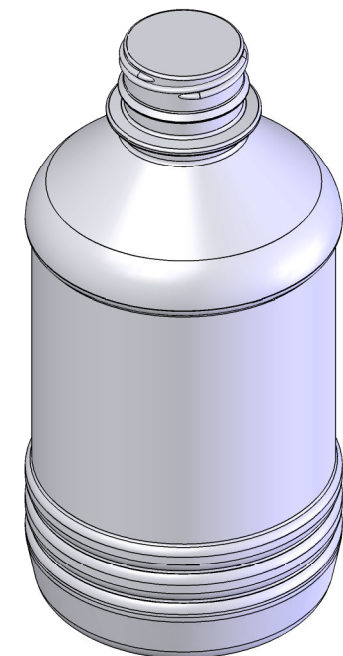


**18.37gr PREFORM  
26.7mm 3 START ALCOA**



**PREFORM STRETCH RATIOS**

**LINEAR 1.47:1  
DIAMETER 3.84:1**



PART DRAWING TO BE APPROVED  
PRIOR TO MOULD PRODUCTION

APPROVED BY: \_\_\_\_\_

DATE: \_\_\_\_\_

PROPRIETARY AND CONFIDENTIAL			
THE INFORMATION CONTAINED IN THIS DRAWING IS CONFIDENTIAL. ANY REPRODUCTION IN PART OR AS A WHOLE WITHOUT THE WRITTEN PERMISSION OF HALLINK RSB INC. IS PROHIBITED.			
BOTTLE OVERFLOW CAPACITY	PART WEIGHT	SHEET SIZE	
318ml ±9ml	19.95g	C	
317ml ±9ml	18.37g		
MATERIAL	APPROVALS	DATE	
PETE	DRAWN AS	01/16/08	
NECK FINISH	CHECKED GS	01/16/08	
28MM PCO 'or'	ISSUED AS	01/16/08	
26.7mm ALCOA			
DO NOT SCALE DRAWING			



**10 OZ. PET GENERIC CONCEPT**

This drawing subject to  
standard industry  
tolerances. (S.P.I.)

JOB NO.	11315-20
CUSTOMER NO.	--
SCALE 1 : 1	SHEET 1 OF 1