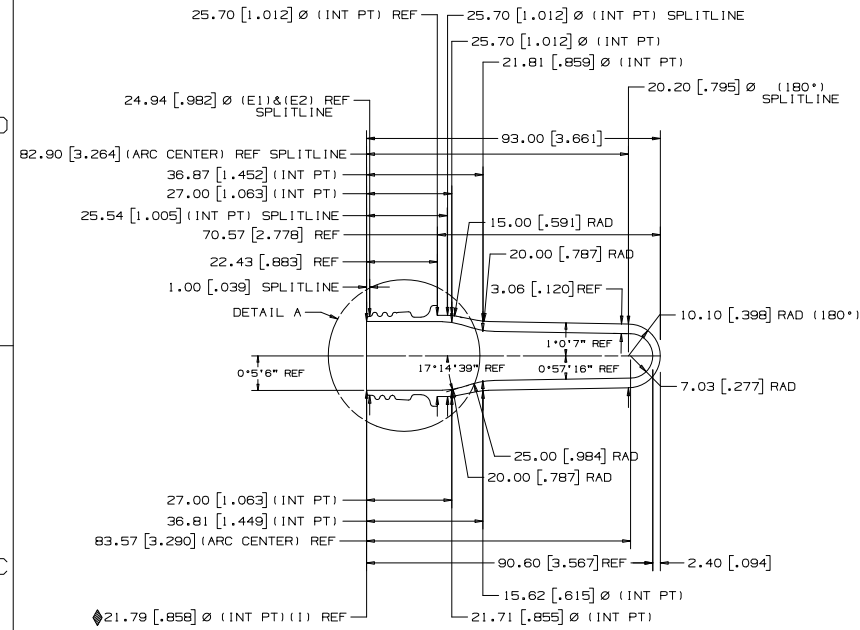
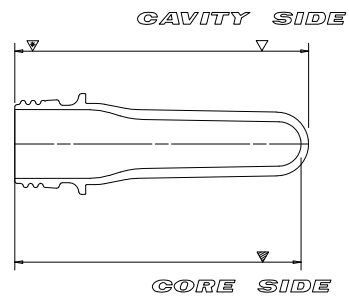


**CAVITY DIMENSIONS**

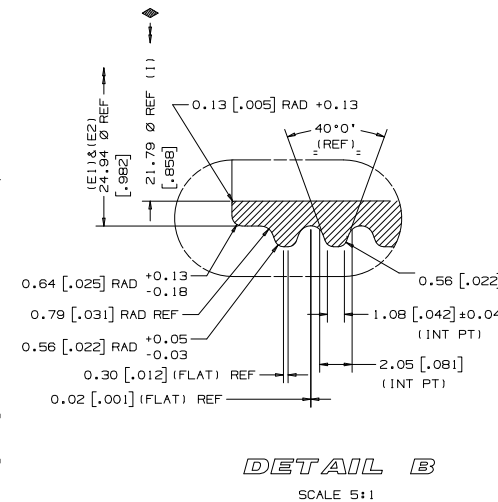
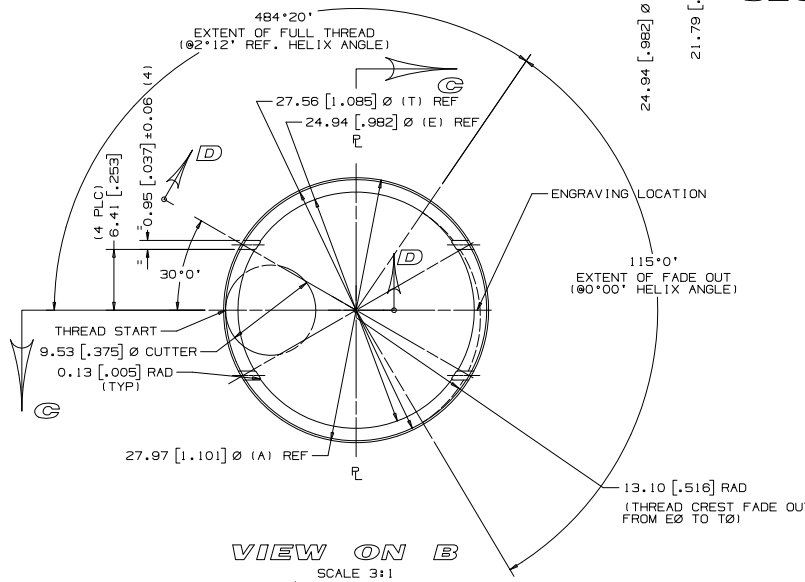
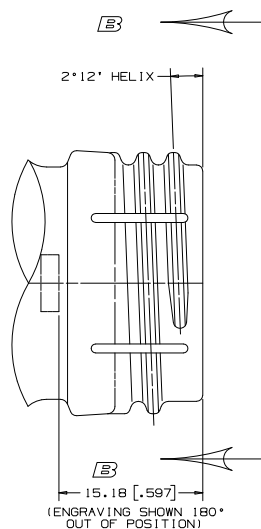
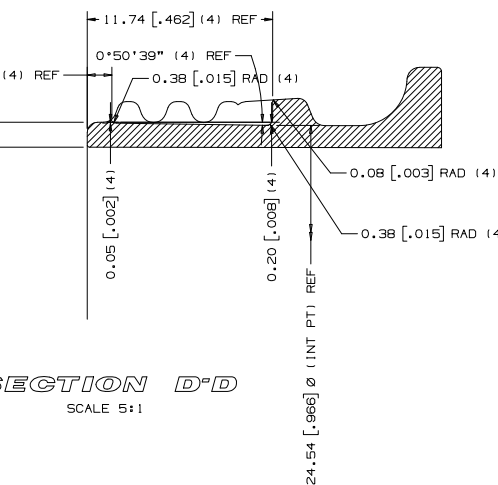
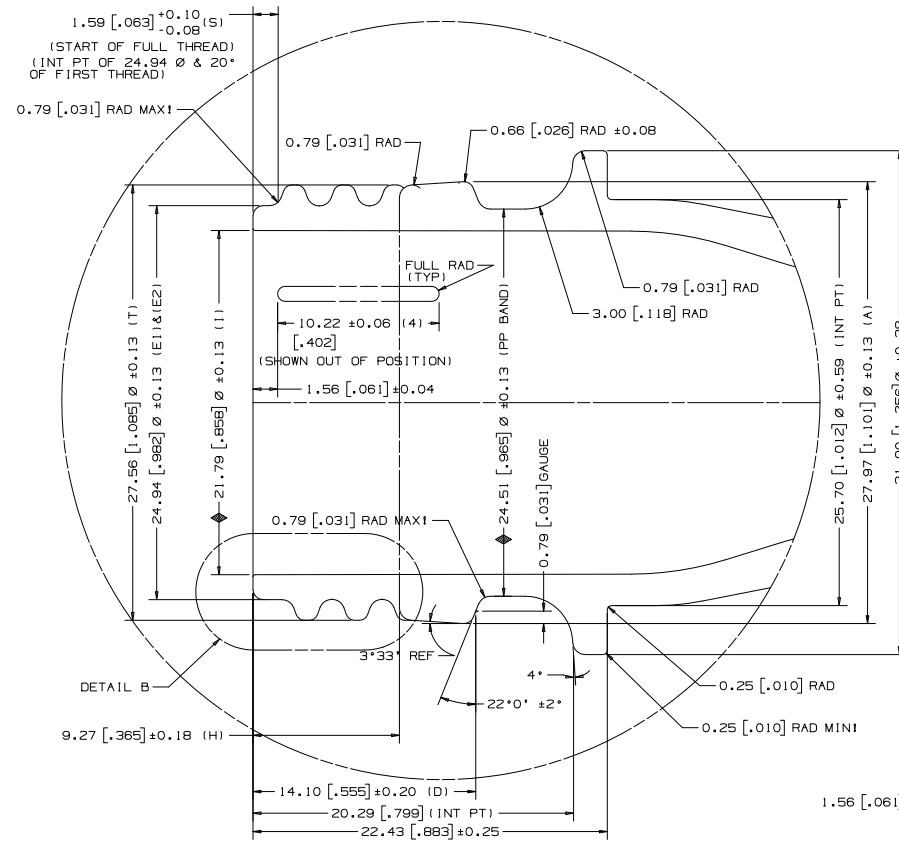


**CORE DIMENSIONS SECTION C-C**



**MOLDING SURFACE FINISHES**

▽ : 0.2 POLISHED  
 ▽ : 0.2-0.3 400-600 GRIT STONE SPI #4  
 ▽ : 0.1-0.2 1000-1200 GRIT STONE SPI #14  
 ▽ : 0.1-0.2 1000-1200 GRIT STONE SPI #14  
 ▽ : 0.1-0.2 1000-1200 GRIT STONE SPI #14



REV.	DATE	DESCRIPTION	BY

103206 CAS 1-1 THRU CAS 1-51 (INCLUDING SPARES)  
 HUSKY JOB No. ENGRAVING SEQUENCE

SIMILAR TO 170003-2

MOLDING SURFACE ENGRAVING DATA:  
 POSITION: AS SHOWN ON MOLDING SURFACE  
 STYLE: GORTON NEGATIVE  
 SIZE: 2.00 HIGH X 0.13 DEEP  
 NOTE: xxx

PLEASE PRINT NAME  
 CUSTOMER APPROVAL SIGNATURE  
 DATE

CUSTOMER AGREES TO IDENTIFY AND SAVE HUSKY, ITS AGENTS AND ALL EMPLOYEES HARLESS FROM ANY AND ALL LOSSES, CLAIMS, ACTIONS, COSTS, EXPENSES, JUDGMENTS, SUBROGATION, AND OTHER DAMAGES RESULTING FROM INJURY TO ANY PERSON INCLUDING INJURY RESULTING IN DEATH, OR DAMAGE (INCLUDING LOSS OR DESTRUCTION) TO PROPERTY OF WHATSOEVER NATURE OF ANY PERSON ARISING OUT OF OR FROM THE USE OF THIS PRODUCT.  
 CUSTOMER AGREES TO IDENTIFY HUSKY AGAINST ALL LIABILITY, COSTS, AND EXPENSES ARISING OUT OF CLAIMS THAT THIS DESIGN INFRINGES THE INTELLECTUAL PROPERTY OF ANY THIRD PARTY.

THIS PRODUCT DRAWING WAS PREPARED BY HUSKY, FROM INFORMATION SUPPLIED BY THE CUSTOMER, FOR THE MANUFACTURE OF MOLDS AND/OR TOOLING AS ORDERED BY THIS CUSTOMER. THIS DRAWING IS NOT TO BE RELEASED TO THIRD PARTIES WITHOUT THE EXPRESS WRITTEN PERMISSION OF THE CUSTOMER.  
 DIMENSIONS SHOWN ON THIS DRAWING ARE PLASTIC SIZES.  
 © 1997 HUSKY INJECTION MOLDING SYSTEMS LTD. ALL RIGHTS RESERVED.

**PRODUCT DATA**

ESTIMATED SHRINKAGE	HUSKY STANDARD
ESTIMATED PART WEIGHT	21.13 ±0.50 g (HUSKY EST)
SPECIFIC GRAVITY	1.335
COMPONENT VOLUME	0.5 LITER
THREAD DRAWING NO.	969-1716-002

MATERIAL: PET  
 ISO METHOD A  
 THIRD ANGLE PROJECTION  
**METRIC**  
 DIMENSIONS ARE IN MILLIMETERS

PART NO. 1173117-0  
 DESCRIPTION: PLASTIC PART ALCOA-1716  
 DRAWINGS: PLOT  
 VIEWS: TOP, INDEX  
 LAYOUTS: L1(TOP), INDEX, INDEX1

**MOLD DIVISION**

PROJ. ENG.	PREFORM
DES. GRP.	M. HOWLETT
CHECKED	--
DATE	97/12/22

**HUSKY** Husky Injection Molding Systems Ltd.  
 530 Queen Street S.  
 Bolton Ontario  
 Canada L7E 5S5

DESCRIPTION	SCALE 1:1 / 5:1
PREFORM DRAWING PLASTIC SIZES 0.5 LITER HUSKY ALCOA-3 THREAD FORM ALCOA 969-1716-002	PROJECT NUMBER
	ITEM NUMBER 1173117-0
	SHEET OF